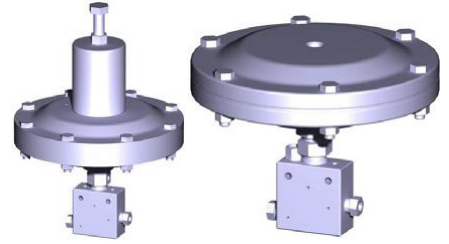


## SPIR STAR 膜片式气控阀



膜片式气控阀是一种高效、经济的用于对各种工艺要求进行控制的“远程开关”，隔膜式的设计是为了提供更可靠的灵活性。

气控阀常闭系列	硬管尺寸	中压		高压	
		最大工作压力	气驱压力	最大工作压力	气驱压力
HVNF2-15K-DO-NC	1/8	15,000(1,035)	45(3.10)	-	-
HVNF4-15K-DO-NC	1/4	15,000(1,035)	65(4.48)	-	-
HVNF6-15K-DO-NC	3/8	15,000(1,035)	65(4.48)	-	-
HVNF8-10K-DO-NC	1/2	10,000(690)	95(6.55)	-	-
HVMF4-20K-DO-NC	1/4	20,000(1,380)	75(5.17)	-	-
HVMF6-20K-DO-NC	3/8	20,000(1,380)	95(6.55)	-	-
HVMF9-20K-DO-NC	9/16	20,000(1,380)	95(6.55)	-	-
HVHF4-30K-DO-NC	1/4	30,000(2,070)	75(5.17)	30,000(2,070)	40(2.75)
HVHF6-30K-DO-NC	3/8	30,000(2,070)	95(6.55)	30,000(2,070)	50(3.45)
HVHF9-30K-DO-NC	9/16	30,000(2,070)	95(6.55)	30,000(2,070)	50(3.45)
HVHF9-40K-DO-NC	9/16	-	-	40,000(2,760)	55(3.79)
HVHF4-60K-DO-NC	1/4	60,000(4,138)	75(5.17)	60,000(4,138)	50(3.45)
HVHF6-60K-DO-NC	3/8	60,000(4,138)	75(5.17)	60,000(4,138)	50(3.45)
HVHF9-60K-DO-NC	9/16	60,000(4,138)	90(6.21)	60,000(4,138)	50(3.45)
HVXF4-100K-DO-NC	1/4	-	-	100,000(6,897)	70(4.83)
HVXF6-150K-DO-NC	3/8	-	-	150,000(10,344)	75(5.17)

气控阀常开系列	硬管尺寸	中压		高压	
		最大工作压力	气驱压力	最大工作压力	气驱压力
HVNF2-15K-DO-NO	1/8	15,000(1,035)	30(2.07)		
HVNF4-15K-DO-NO	1/4	15,000(1,035)	40(2.75)		
HVNF6-15K-DO-NO	3/8	15,000(1,035)	40(2.75)		
HVNF8-10K-D0-NO	1/2	10,000(690)	65(4.48)		
HVMF4-20K-D0-NO	1/4	20,000(1,380)	50(3.45)		
HVMF6-20K-DO-NO	3/8	20,000(1,380)	75(5.17)		
HVMF9-20K-D0-NO	9/16	20,000(1,380)	75(5.17)		
HVHF4-30K-D0-NO	1/4	30,000(2,070)	50(3.45)	30,000(2,070)	30(2.07)
HVHF6-30K-DO-NO	3/8	30,000(2,070)	75(5.17)	30,000(2,070)	40(2.75)
HVHF9-30K-D0-NO	9/16	30,000(2,070)	75(5.17)	30,000(2,070)	40(2.75)
HVHF9-40K-DO-NO	9/16			40,000(2,760)	45(3.10)
HVHF4-60K-D0-NO	1/4	60,000(4,138)	75(5.17)	60,000(4,138)	40(2.75)
HVHF6-60K-DO-NO	3/8	60,000(4,138)	75(5.17)	60,000(4,138)	40(2.75)
HVHF9-60K-DO-NO	9/16	60,000(4,138)	90(6.21)	60,000(4,138)	45(3.10)
HVXF4-100K-D0-NO	1/4	100,000(6,895)	100(6.98)	100,000(6,897)	50(3.45)
HVXF6-150K-D0-NO	3/8			150,000(10,344)	80(5.52)